

CIVIL | ELECTRICAL | SOLAR | EPC | STRUCTURAL | SMARTCITY



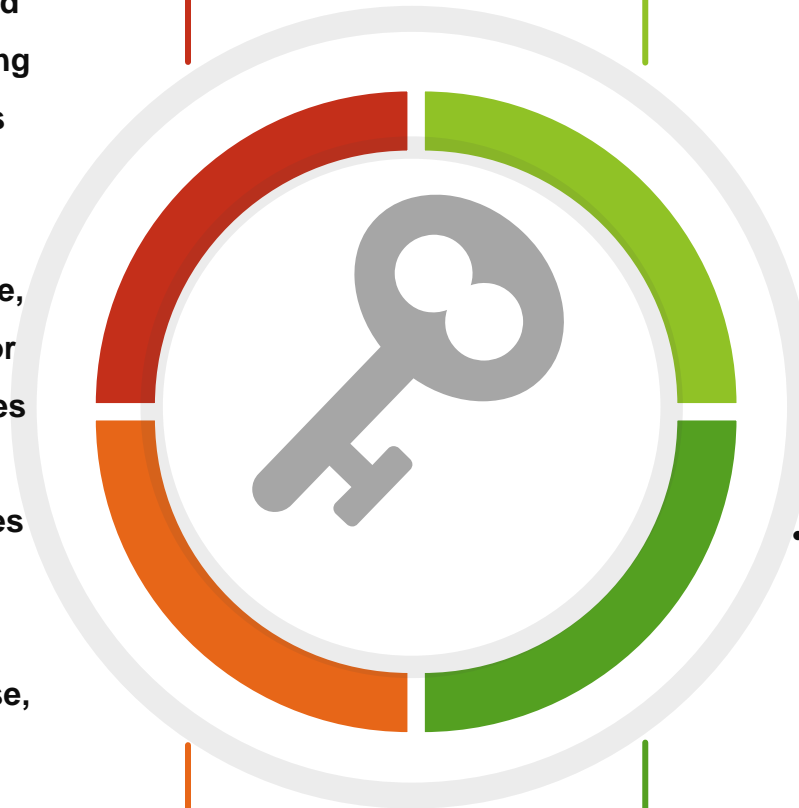
Ampere India Associates

INTRODUCTION

ABOUT US

Ampere was established in the year 2018 as an Electrical item Trade unit & It has since diversified and grown into a leading multi-product Engineering trading unit having a combined Electrical & Mechanical items required for Power Transmission , Distribution Lines, Area Lighting & Sub-station.

We had grown organically by leveraging cost effective, comprehensive and highly resilient processes, vendor & subcontractor network, effective purchasing policies and highly responsive marketing setup. We are providing a one stop shop to our Customers & Utilities by synergizing entrepreneurial talent, engineering capability and domain knowledge, with our strength resulting from organizational size, large resource base, acclaimed brand and marketing network. Thus the solution produced by this synergy is larger than the sum of the parts.



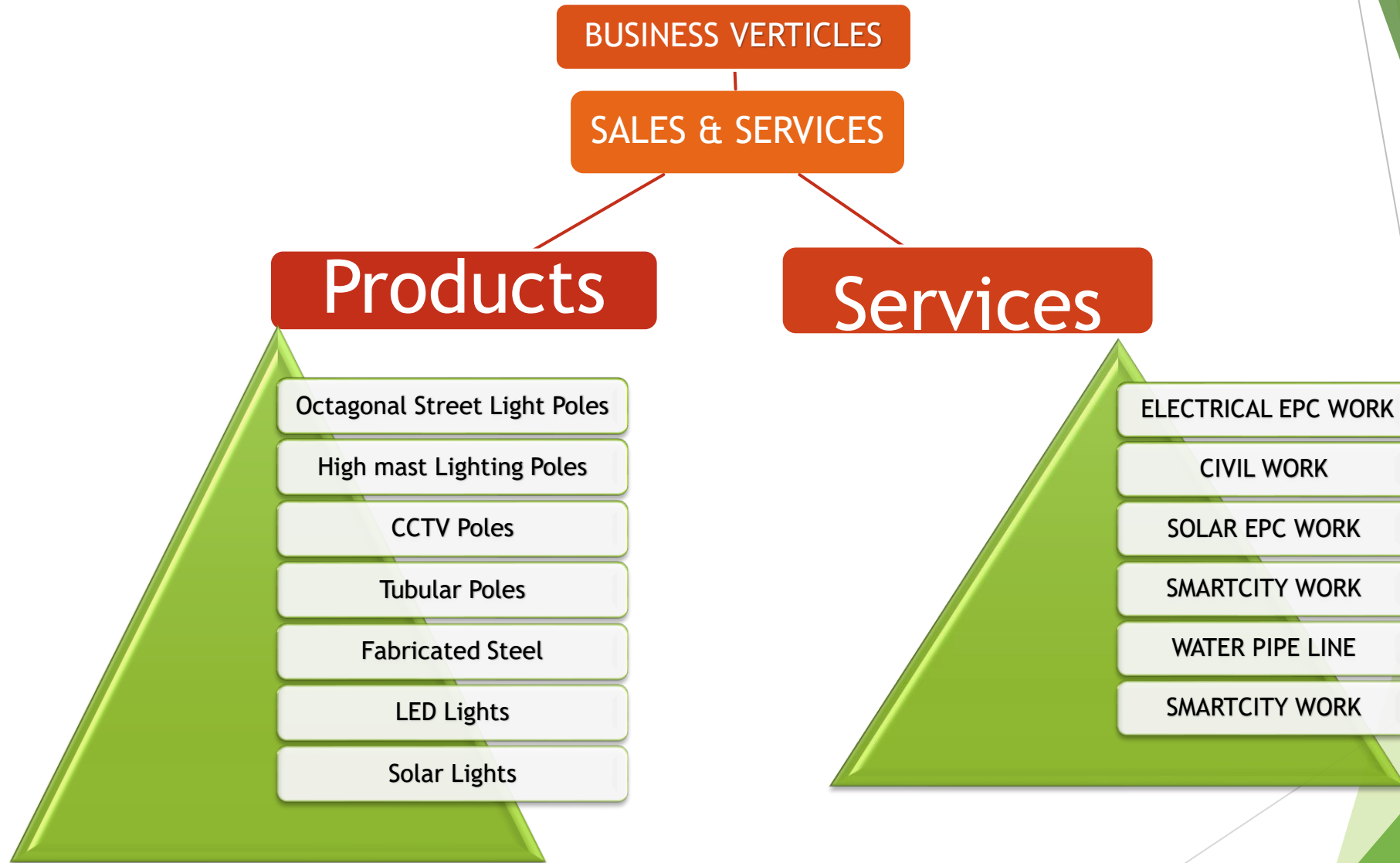
Our Mission & Vision

- To provide reliable products and services of high functional integrity, to help safe, secure and uninterrupted supply of Electrical Power and construct Civil infrastructure while observing health, safety and environmental standards.

Our Objective

- To provide full gamut of engineering supply and services to ensure safe, secured and uninterrupted transmission & distribution of electrical power and transmission and a better constructive world.

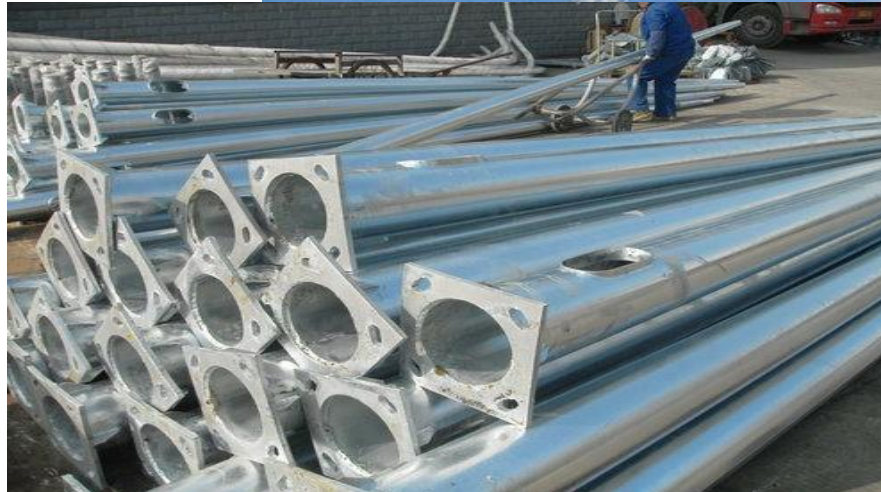
SCOPE OF SERVICE



SMARTCITY | CIVIL | ELECTRICAL | SOLAR | EPC | STRUCTURAL

KEY ACTIVITIES

- OCTAGONAL POLE
- TUBULAR POLES
- TRAFFIC SIGNAL POLES
- CCTV POLES
- SOLAR POLES
- HIGHMAST LIGHT
- FLAG MAST



KEY ACTIVITIES

- **FABRICATION OF STEEL**

1. V-Cross Arm
2. Beam
3. Lighting Arm
4. Pile Liner
5. Clamp
6. WATER TANK STRUCTURE
7. ROOF TOP SOLAR STRUCTURE
8. STRUCTURAL BEAM
9. FOUNDATION BOLTS
10. TEMPLATES



KEY ACTIVITIES

- **LIGHTS**

1. **LED FLOOD LIGHT (60 Watt to 400 Watt)**
2. **LED STREET LIGHT (20 Watt to 200 Watt)**
(BAJAJ/HPL/ CG)
3. **SOLAR LED LIGHT**
 - > Integrated type
 - > Semi Integrated Type



EPC – CIVIL

❖ Construction of

- Educational, Residential, Government Building.
- Rural Roads, State Highways, Concrete Roads, Pathways.
- River crossing bridges, Railway crossing bridges and culverts.
- Over head community water tank, Water Dams, River Dams
- Drainage systems (Storm Water drain, Effluent drain collection & treatment, Recirculation of treated water).

Major Clients

1. PWD Dept Odisha
2. PGCIL
3. Rural Works Dept Odisha
4. OPTCL
5. OHPC



Electrical Turnkey Projects – HT/LT

❖ Design, Supply, Erection, Commissioning of

- Over head transmission lines & Sub-station Upto 132KV
- Area Lighting & illumination.
- Cable Tray fixing & underground and overhead Cable Laying
- LT work & Panel electrification
- Building electrification
- Solar Roof Top Work (On-Grid, Off-Grid & Hybrid System)

Client List

1. PGCIL
2. OPTCL
3. BMC Bhubaneswar
4. Idco Odisha
5. Railways
6. Honeywell



CLIENTELE



Humanity Ahead



immt



PWD
Public Works Department
Govt. of Odisha



पावरग्रिड

एन एस आई सी
NSIC



Central Organisation for Railway
Electrification

idco
Your power to grow
ISO 9001 & 14001 Corporation



India Tourism Development
Corporation Ltd.



Shrushti
Contech Pvt Ltd
An ISO 9001:2008 Certified Company



TOOLS & MACHINERY FOR PROJECTS

Sl.no.	Description	Quantity (Nos.)		Sl.no.	Description	Quantity (Nos.)
1	Escort JCB Excavator	1 No		18	Spade	10 Nos
2	Hydraulic Mobile Crane	1 No		19	Hydraulic Compressor	2 Nos
3	Truck	1 No		20	Turn Table (Cable uncoiler)	3 Sets
4	Tractor	1 No		21	Turn Buckle	10 Nos
5	Bolero	1 No		22	Concrete Mixture Machine	2 Sets
6	Tata Mobile	1 No		23	Vibrator	2 Sets
7	Derick of different sizes	5 Nos		24	Water Tank	1 Sets
8	Rope (Plastic & Manila)	5 Kms		25	Earth Resistance megger	1 Nos
9	Pully	10 Nos		26	Insulator Megger (1 KV)	1 Nos
10	Chain Pully	4 Nos		27	Motorized Megger (5KV)	1 No
11	Jack	10 Nos		28	Multi meter	3 No
12	Crow bar	10 Nos		29	Tongue tester	2 Nos
13	Pick Axe	10 Nos		30	Dynamometer	2 Nos
14	Diesel Pump	5 Nos		31	Transportable Generator	2 Sets
15	Leveling machine with Accessories	2 Sets		32	Welding Genset (Arch & MIG)	2 Sets
16	Thedolite with Accessories	1 Set		33	Gas Cutter	2 Sets
17	Chain	5 Nos		34	Hand Drill	2 Sets

CONTACT US

Workshop :

Behind Emrald Hotel, Near DLF Tower, Chandaka IE, Patia , Bhubaneswar -751024

Registered Office

- 13BB, Mani Trivuban, Raghunathpur, Bhubaneswar, Odisha 751024
- Call us at - 9348084588
- Email: ampereindia01@gmail.com

www.ampereindia.in

THANK YOU